



N.I +44 (0) 28 3752 4731

UK +44 (0) 1977 666 805

Email: sales@cormacleonard.com

2017 VOLVO FMX420 8X4 STEEL TIPPER

Tippers 8x4 / 2017

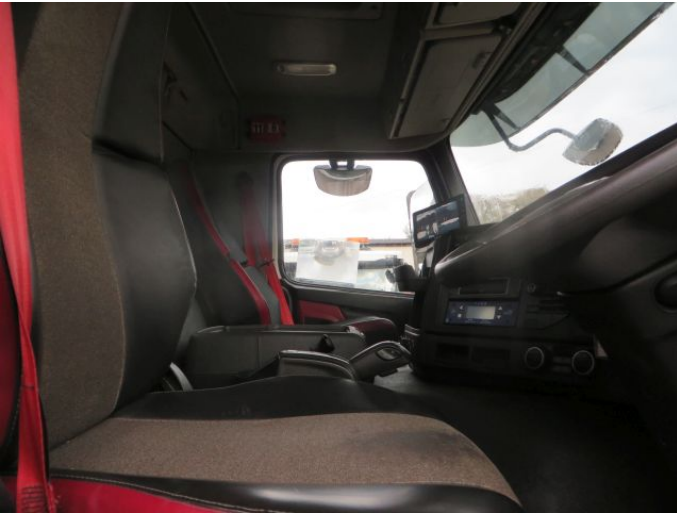
8x4 Steel Tipper

Day Cab

Charlton Body

I-Shift





Specifications

Make	Volvo
Model	FMX420
Year	2017

General

Description	2017 VOLVO FMX420 8X4 STEEL TIPPER
Location	Armagh

Engine / Transmission

Engine Type	Volvo FMX
BHP	420
Euro	6
Gearbox Type	Auto
Gearbox	I-Shift
Number of Gears	13
Ad Blue	Yes

Axles

Axle Config	8x4
Tyre Size	295/80/22.5
Diff Lock	Yes

Body

Type	Steel Tipper
------	--------------

Make	Charlton
Easysheet	Yes
Side Guards	Yes
Flashing Beacons	Yes
Tipping Ram	Yes

Cab

Cab Series	FMX
Cab Type	Day
Number of Seats	2
Air Con	Yes
Tachograph	Digi
Sunvisor	Yes
Cruise Control	Yes
Camera	Yes
P.T.O	Yes

Weights & Dimensions

Plated Weight	32000
---------------	-------

8x4 Steel Tipper
 Volvo FMX Series Day Cab
 I-Shift 13spd Automatic Gear Box
 Volvo 6 Cylinder 420Bhp Euro 6 Engine
 Charlton Steel Body
 Easy Sheet
 Manual Tail Door
 Edbro Front End Ram
 Single Alloy Fuel Tank
 Ad Blue
 Auto Lube
 Single Reduction Drive Axles
 Diff Locks
 Front & Rear 3 Leaf Steel Suspension
 External Sunvisor
 Electric Driver & Passenger Windows

Electric Adjustable Heated Mirrors

Pop-Up Sunroof

Air Conditioning

CD Player

Digital Tacho

Camera

PM1155 Weigher

P.T.O

CB Radio

Flashing Beacons

Centre Storage Compartments



N.I +44 (0) 28 3752 4731

UK +44 (0) 1977 666 805

Email: sales@cormacleonard.com

<https://www.cormacleonard.com>