



N.I +44 (0) 28 3752 4731

UK +44 (0) 1977 666 805

Email: sales@cormacleonard.com

2013 (63) Scania P400 8x4 Steel Tipper

Tippers 8x4 / 2013

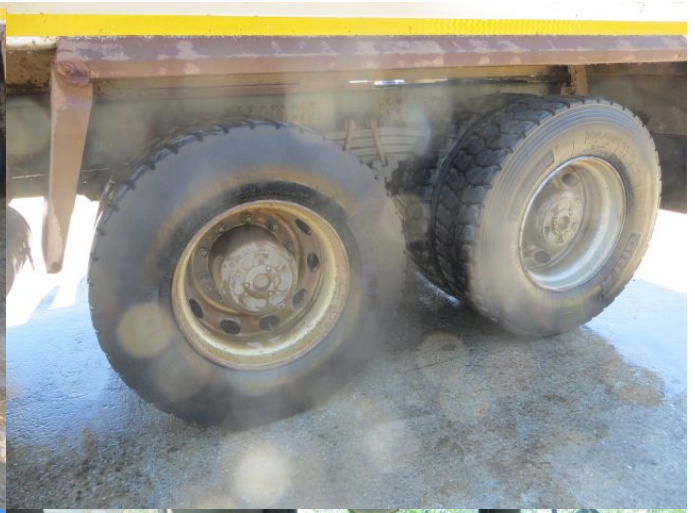
8x4 Steel Tipper

Thompsons Body

8spd Manual Gear Box

Hub Reduction Drive Axles





Specifications

Make

Scania

Model

P400

Year

2013

General

Description

8x4 Steel Tipper

Location

Eggborough

Engine / Transmission

Engine Type	Scania 6 Cylinder
BHP	400
Gearbox	Manual
Number of Gears	8spd

Axles

Axle Config	8x4
Axle Type	Hub Reduction
Tyre Size	315/80R22.5
Diff Lock	Yes

Body

Type	Steel Tipper
Make	Thompsons
Easysheet	Yes
Tipping Ram	Yes

Cab

Cab Series	P Series
Cab Type	Day Cab
Number of Seats	2
Air Con	Yes
CD Player / Radio	Yes
Tachograph	Digital
Sunvisor	Yes
Camera	Yes
Weigher	Yes
P.T.O	Yes
Flashing Beacons	Yes
Electric Windows	Yes

8x4 Steel Tipper
Scania P Series Day Cab
8spd Manual Gear Box
Scania 6 Cylinder 400Bhp Engine
Thompsons Steel Body
Manual Tail Door
Easy Sheet
Edbro Front End Ram
Single Steel Fuel Tank
Hub Reduction Drive Axles
Diff Locks
Drum Brakes
Front 3 Leaf & Rear 4 Leaf Steel Suspension
External Sunvisor
Electric Driver & Passenger Windows
Electric Adjustable Heated Mirrors
Air Conditioning
CD Player
Digital Tacho
Camera
PM1155 Weigher
P.T.O
Flashing Beacons
Centre Storage Compartments



N.I +44 (0) 28 3752 4731
UK +44 (0) 1977 666 805
Email: sales@cormacleonard.com

<https://www.cormacleonard.com>